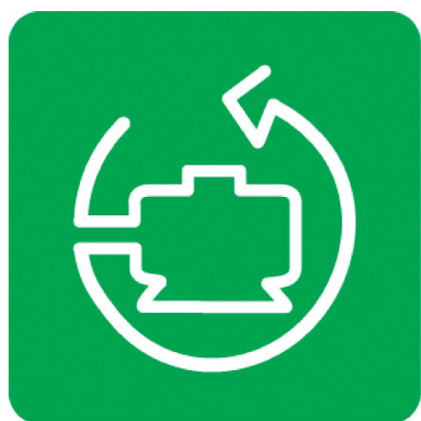


SoMove Setup software

for motor control devices

Catalog

May **2017**



Quick access to Product information

Select your Catalogue, your Training

Digi-Cat

The complete digital catalogue for industrial automation



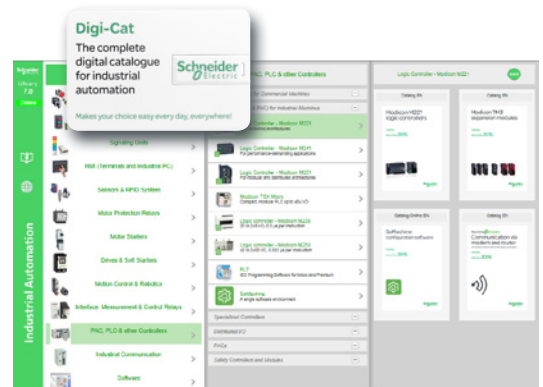
Makes your choice easy every day, everywhere!



With just 3 clicks, you can reach the 7,000 pages of the Industrial Automation & Control catalogue, in both English and French.

- Digi-Cat is available on a USB key (for PC). To get your Digi-Cat, please contact your local center
- Download Digi-Cat from this address:

<http://digi-cat.schneider-electric.com/download.html>



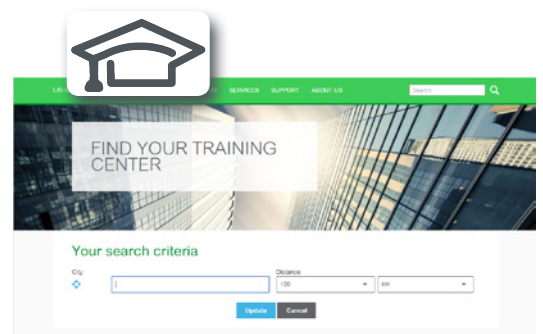
Find your training

- Find the right training for your needs
- Locate the training center with the selector tool, using this address:

<http://www.schneider-electric.com/b2b/en/services/training/technical-training.jsp>

then click on

Find your training center



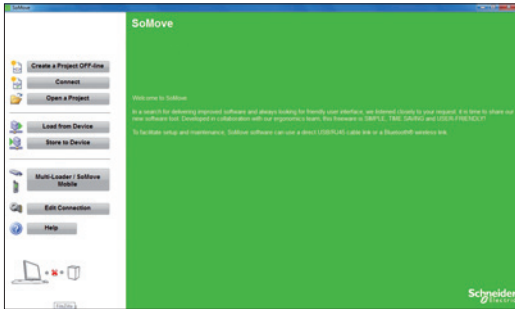
Life Is On

Schneider
Electric

General contents

**SoMove Setup software
for motor control devices**

- **Presentation**..... *page 2*
- **Functions** *page 2*
- **References** *page 4*
- **Compatibility**..... *page 5*
- **Product reference index**..... *page 6*



SoMove start page

Presentation

SoMove is user-friendly setup software for PC designed for configuring the following Schneider Electric motor control devices:

- Altivar 12, Altivar 312, Altivar 31, Altivar 32, Altivar Machine ATV320, Altivar 61, Altivar 71 and Altivar Process drives
- Altistart 22 and Altistart 48 soft starters
- TeSys U starter-controllers
- TeSys T motor management system
- Lexium 32 servo drives
- Lexium 32i integrated servo drives

SoMove software incorporates various functions for the device setup phases, such as:

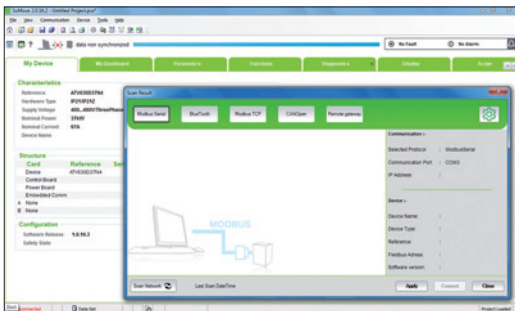
- configuration preparation
- testing and start-up
- maintenance

To facilitate setup and maintenance, SoMove software can use a direct USB/RJ45 cable (Modbus serial) link. Depending on the products and the network architecture, it can also use:

- a direct Ethernet RJ45/RJ45 cable (Modbus TCP) link
- a Wi-Fi wireless link
- a Bluetooth® wireless link

SoMove software is compatible with the Multi-Loader configuration tool.

This tool can save a significant amount of time when loading, duplicating or editing configurations on a device.



Example of connecting SoMove software to a device

SoMove software and the DTMs (Device Type Managers) associated with the devices can be downloaded from our website www.schneider-electric.com.

Functions

Configuration preparation in disconnected mode

SoMove software has a genuine disconnected mode which provides access to the device parameters. This mode can be used to generate the device configuration. The configuration can be saved, printed and exported to office automation software.

SoMove software also checks the consistency of the parameters, validating the configurations created in disconnected mode.

A large number of functions are available in disconnected mode, in particular:

- the device configuration software wizard
- the configuration comparison function
- saving, copying, printing and creating configuration files for export Microsoft Excel® tool, and sending configurations by e-mail.

Setup

When the PC is connected directly to the device or to the communication bus (1), SoMove software can be used for:

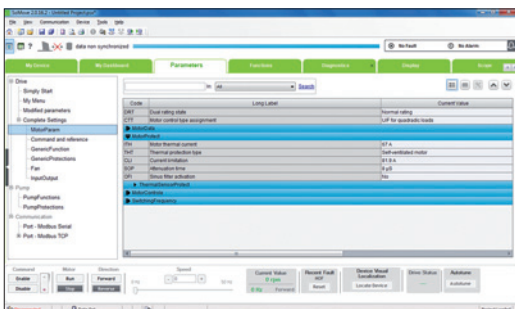
- transferring the generated configuration onto the device
- adjustment and monitoring, which includes such functions as:
 - the oscilloscope
 - display of communication parameters
- easy control via the control panel user interface
- saving the final configuration

Maintenance

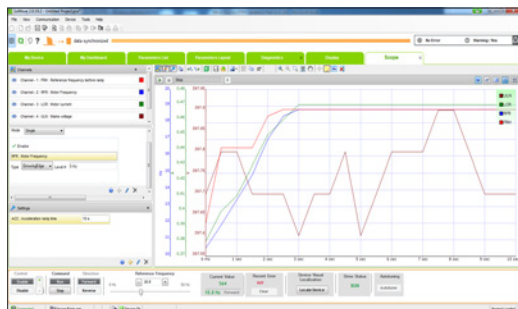
In order to simplify maintenance operations, SoMove software can be used to:

- compare the configuration of a device currently being used with a configuration saved on the PC
- transfer a configuration to a device
- compare oscilloscope curves
- save oscilloscope curves and detected faults

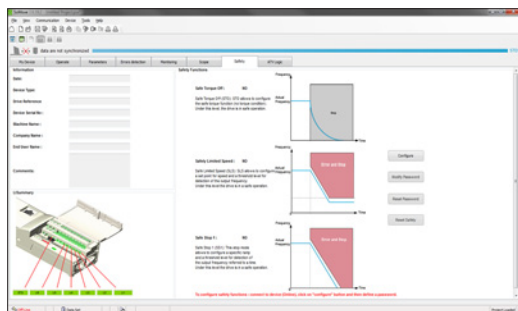
(1) Requires a specific connection accessory. For further information, please consult our Customer Care Centre.



SoMove control panel



Oscilloscope function



Safety function

Functions (continued)

Tabs

SoMove software provides fast, direct access to information on the device via five tabs:

- **My Device:** Displays the device information (type, reference, software versions, option cards, etc.)
- **Parameters:** Displays the device adjustment parameters, shown in a table or in the form of diagrams
- **Faults:** Displays a list of the faults that may be detected with the device, the fault log and any current detected faults or alarms
- **Monitoring:** Provides a realtime display of the device status, its I/O and the monitoring parameters
- **Oscilloscope:** Provides a high-speed oscilloscope (for recording traces in the device) or low-speed oscilloscope (for recording traces in the software for devices that do not have an integrated oscilloscope)

SoMove's user interface automatically adapts to the specific configured device by offering additional tabs:

- **Safety:** For configuring the Safety functions on Altivar 32 variable speed drives and Lexium 32 servo drives.

It can also be used to:

- display the I/O
- compile and print a report
- **ATVLogic:** For accessing the Altivar 32 drive's programmable function blocks. It can also be used to:
 - develop a program and transfer it to the drive
 - display and debug the program already on the drive
- **Auto-tuning:** For accessing the servo control settings for the three different operating modes of the Lexium 32 servo drive's auto-tuning function.

These three modes are:

- automatic mode for quick setup, designed for simple applications
- semi-automatic mode for quick setup, with the option of optimizing the servo drive/servo motor combination (access to the mechanical and dynamic behaviour parameters)
- expert mode for optimizing the adjustment parameters, designed for complex applications

Additional tabs for Altivar Process variable speed drives:

- **My Dashboard:** Displays the adjustment and display variables, in a configurable dashboard, in order to adapt to the client application
- **Functions:** Displays a preview of the device adjustment parameters
- **Diagnostics:** Displays the list of errors and alarms that have occurred on the device
- **Pump Applications:** Provides access to special pump functions:
 - setting the characteristic pump curves, and displaying the operating point in real time
 - configuring the pump monitoring parameters

Connections

Modbus serial link

The USB/RJ45 cable connects to the USB port of the PC running SoMove software and to the RJ45 port on the device.

Modbus Ethernet and Wi-Fi link

The RJ45/RJ45 cable connects to the Ethernet port of the PC running SoMove software and to the RJ45 Ethernet port on the device.

The cable can also be used to connect the device to an Ethernet router, with the PC accessing the device remotely via a wired connection or Wi-Fi link.

Note: Please consult our website www.schneider-electric.com for details of ConneXium connection accessories.

Bluetooth® wireless link

SoMove software can communicate via Bluetooth® wireless link with any Bluetooth® enabled device.

If the device is not Bluetooth® enabled, use the Modbus-Bluetooth® adapter (1). This adapter is connected to the terminal port or the Modbus network port on the device. It has a 20 m/65 ft range (class 2).

If the PC does not have Bluetooth® technology, use the USB-Bluetooth® adapter which connects to a PC USB port.

(1) See the list of available devices on page 4.



SoMove setup software



TCSWAAC13FB



VW3A8115

References

Description	Reference	Weight kg/ lb
SoMove setup software Includes: <input type="checkbox"/> SoMove setup software for PC in English, French, German, Italian, Spanish and Chinese	SoMove software and the DTMs (Device Type Managers) associated with the devices can be downloaded from our website www.schneider-electric.com .	
USB/RJ45 cable <input type="checkbox"/> Used to connect a PC to the device. <input type="checkbox"/> This cable is 2.5 m/8.20 ft long and has a USB connector (PC end) and an RJ45 connector (device end).	TCSMCNAM3M002P	—
RJ45/RJ45 cable <input type="checkbox"/> Used to connect a PC or an Ethernet router to the device. <input type="checkbox"/> This cable is 2 m/6.56 ft long and has two type A RJ45 connectors (PC end and device end).	490NTW00002	—
Modbus/Uni-Telway-Bluetooth® adapter <input type="checkbox"/> Used to enable any non-Bluetooth® device to communicate via Bluetooth® wireless link (1). Includes: <input type="checkbox"/> 1 Bluetooth® adapter (range 20 m/65.62 ft, class 2) with an RJ45 connector <input type="checkbox"/> For SoMove: 1 x 0.1 m/0.33 ft cordset with 2 RJ45 connectors	TCSWAAC13FB	0.032/ 0.071
USB-Bluetooth® adapter for PC <input type="checkbox"/> Used to enable any non-Bluetooth® PC to communicate via Bluetooth® wireless link (2). <input type="checkbox"/> It connects to a USB port on the PC. <input type="checkbox"/> Range 10 m/32.81 ft, class 2	VW3A8115	0.214/ 0.472

(1) Available only for the following devices:

- Altivar 12, Altivar 312, Altivar 31, Altivar 61, Altivar 71 and Altivar Process drives
- Altistart 22 and Altistart 48 starters
- TeSys U starter-controllers
- TeSys T motor management system
- Lexium 32 servo drives

(2) Check the manufacturer's specification.

Compatibility of SoMove software with specific devices

Device	Range	Version of software on the device
Variable speed drive	Altivar 12, Altivar 312, Altivar 32	≥ 1.0
	Altivar 31	≥ 1.1
	Altivar 61, Altivar 71	≥ 1.6
	Altivar Process (ATV 6●●)	≥ 1.1
	Altivar Machine ATV320	≥ 2.4
Soft starter	Altistart 22	≥ 1.0
	Altistart 48	≥ 1.5
Starter-controller	TeSys U	≥ 1.0
Motor management system	TeSys T	≥ 1.0
Servo drive	Lexium 32	≥ 1.0
Integrated servo drive	Lexium 32i	≥ 1.0

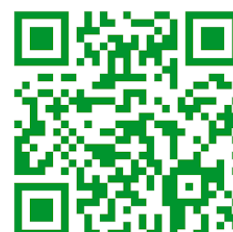
Compatibility of SoMove software with systems and minimum required configuration

SoMove operates in the following PC environments and configurations:

- Compatibility:
 - Microsoft Windows® 7 Professional, 32 and 64 bit
 - Microsoft Windows® XP Professional SP3, 32 and 64 bit
 - Microsoft Windows® 8, 32 and 64 bit
 - Microsoft Windows® 8.1, 32 and 64 bit
- Minimum configuration:
 - 1 GHz Pentium® IV processor (or equivalent)
 - 1 GB available disk space
 - 1 GB of RAM

4	
490NTW00002	4
T	
TCSMCNAM3M002P	4
TCSWAAC13FB	4
V	
VW3A8115	4

The Next Generation



Schneider Electric Industries SAS

Head Office
35, rue Joseph Monier
F-92500 Rueil-Malmaison
France

www.schneider-electric.com/msx

The information provided in this documentation contains general descriptions and/or technical characteristics of the performance of the products contained herein. This documentation is not intended as a substitute for and is not to be used for determining suitability or reliability of these products for specific user applications. It is the duty of any such user or integrator to perform the appropriate and complete risk analysis, evaluation and testing of the products with respect to the relevant specific application or use thereof. Neither Schneider Electric nor any of its affiliates or subsidiaries shall be responsible or liable for misuse of the information contained herein.

Design: Schneider Electric
Photos: Schneider Electric